

RELIABILITY DURABILITY HIGH PERFORMANCE

are our commitments to every Sullair air compressor!



SULLAIR ASIA PTE LTD

Add: 30 Pioneer Crescent, #10-15, West Park BizCentral, Singapore 628560
Tel: +65 6305 7442

SULLAIR TAIWAN

美商寿力有限公司台湾分公司

Add: 台湾新北市林口区中山路 248 號 3 樓之 1
Tel: +886 2 2601-3500

SULLAIR.COM   


A Hitachi Group Company

All rights reserved. Specifications subject to change without notice.
The Sullair symbol, Sullair wordmark, Optimalair®, AirLinx®, and Sullube® are registered trademarks of Sullair, LLC.

8802211905

LS SERIES 90-110 kW 7.6/8.6/10.6 bar(g)

Stationary Oil Injection Screw Air Compressor



ABOUT SULLAIR

Since 1965, Sullair has been leading innovation in the field of screw compression and vacuum technology. With more than 50 years of experience, we have made a new round of innovation in this area. Sullair adopts the most advanced technology, equipment and production processes to provide customers with the best air compressors and vacuum equipment to meet the most demanding requirements of customers. Sullair has a first-class screw rotor design, which leads the industry trend in this field.

"RELIABILITY"

Our positioning is very clear, that is to become the preferred partner of customers. As the global market leader in technology and innovation in the industry, Sullair is committed to creating a unique and distinguished experience for customers: trust, confidence and reassurance. We firmly believe that our responsibility is to continuously and effectively help our customers enhance their business strength and to provide the highest quality compressed air systems worldwide. Many internationally renowned companies are using Sullair products in their daily operation.

"DURABILITY"

Long-lasting durability. Sullair compressors are driven by a proven air end that can ensure long-term and stable operation regardless of rotation. With more than half a century of manufacturing experience, Sullair compressor has set up factories and stores throughout the world, everlasting with vitality.

"HIGH PERFORMANCE"

Operational efficiency is of paramount importance, and we are always committed to creating equipment that meets your operational needs. With exceptional performance, Sullair can perform various tasks extremely well. We provide you with compressed air equipment to help you make effective use of pure, high-quality air.

With more than 50-year experience of screw design and manufacturing, Sullair presents the world a brand image of "long-lasting durability and high reliability".

Now, Sullair has brought you its brand new LS series air end of fluid injection screw air compressor, while maintaining Sullair's product feature of long-lasting durability and high reliability, it also brings you excellent performance experience.



WORLD-CLASS AIR END EFFICIENCY

Driving air compressors with less power means more energy-efficient.

- **Patented Screw Air End of Sullair**
They are Sullair's most efficient air ends.
- **Sullair's Original Electronically Controlled Spiral Valve Technology**
The market-proven technology of spiral valve now adopts more precise control methods to meet the changes in your air system.
- **VSD Regulating System**
Sullair provides you with an optimized energy-saving VSD system. It continuously and highly precisely adjusts the speed of the air end to meet the changes in your air system.

MORE CONVENIENT AND SIMPLE IN OPERATION

Simpler and more intuitive operation and service

- **Sullair's Independently Developed 10-inch Color Touch Controller**
Various key operating parameters of the air compressor can be intuitively understood.
- **Sullair's Independently Developed Airlinx Remote Monitoring System**
A faster operation can be made by using a mobile phone, computer or tablet to remotely control the air compressor.
(Note: the electronically controlled spiral valve is optional)
- **Optimized Housing Design**
Hinged door panel connection has been adopted to facilitate care and related maintenance of the air compressor.

SULLAIR'S LEGENDARY HIGH RELIABILITY AND DURABILITY

Longer service life!

- The new generation of Sullair's patented design adopts a more simplified and integrated design, which reduces the failure and leakage risks, and integrates the high quality and reliability of Sullair over the past decades. 5 years warranty will be provided for the compressor!
- Standard TEFC enclosed motor, higher protection level, meet the requirements of dust-proof and waterproof under extreme working environment. Energy efficiency certification of IE3, more energy saving.
- Low speed (1,450 rpm) main motors provide longer bearing and winding service life than high speed motors.
- World-class parts suppliers and their quality help you achieve longer product life in extreme working environments.
- A fully enclosed chassis is equipped to prevent dust and debris from entering the unit and causing damage.

KEY PRODUCT FEATURES AND INDICATORS THAT BRING YOU BETTER PERFORMANCE

The new generation of 90-110kW is standardly equipped with the latest generation of patented screw compressor, and its various internal parts are specially designed for it. Sullair guarantees that the performance of these parts is at the highest level.



1. Sullair Optimized Air Filter

- Ultra-efficient air intake filtration, 99.9% filtration accuracy (based on ISO5011), effectively extending the life of various precision parts.
- Heavy-duty designed, providing 5 times higher ash capacity than traditional air filters, longer maintenance intervals and lower overall maintenance costs.

2. Screw Air End (Sullair's patented design)

The high durability and reliability of Sullair screw air end, the heart of air compressors, are consistently recognized throughout the world. The new generation of Sullair screw compressors includes:

- The latest casting technology is adopted to integrate various oil circuits and passages to reduce leakage points.
- Using the world's leading asymmetrical screw type, US patented design, the screw is imported from the United States.
- The long-tested bearing life of the compressor effectively prolongs the service life of the screw compressor and reduces the overall maintenance cost of your screw compressor.
- 5 years warranty will be provided for the original parts of the screw air end, which is much better than other brands in the market.
- You can choose the exclusive screw air end of Sullair which is the only one in the industry that provides with 10 Years Diamond Warranty. (24KT maintenance-free fluid are required)

3. Sullair Fluid/Air Separator

- Designed for low voltage drop to reduce power loss.
- Up to 8,000 hours of maintenance cycle, much longer than other brands in the market, reducing your overall maintenance costs. (Note: adjusted based on actual operating conditions)
- Ultra-efficient filtration accuracy, exhaust oil content is less than 2 ppm, reducing fluid loss and reducing overall maintenance costs.

4. Cooling system

- With heavy-duty cooling system design and plus large cooler and fan design, ensuring continuous use at an ambient temperature of 46° C.
- Cooler cleaning window is added for easy maintenance and cleaning.
- The split cooler design effectively avoids the generation of thermal stress.
- You can choose the 55° C high temperature design.

5. Motor

- TEFC enclosed high-efficiency motor, energy efficiency center certified IE3 motor.
- Heavy-duty designed low-speed motors, which have longer bearing life than high-speed motors.
- Grade F of insulation grade, and grade B in temperature rise test, the temperature rise is lower than other ordinary Grade F insulation grade, and the service life of winding is at least doubled.

Multiple Control Methods

- **Optional Electronically Controlled Spiral Valve:** The market-proven technology of spiral valve now adopts more precisely electronically control motors to meet the changes in your air system.
- **VSD Control:** Sullair provides the most optimized VSD control system. It can adjust the speed of the air end by a wide range of regulation (the air volume adjustment range is up to 75%) to meet the changes in your air consumption.

High-quality Fluid

- Standardly equipped with Sullube fluid, with up to 8,000-hour maintenance cycle, which effectively avoids excessive maintenance and reduces your overall maintenance costs.
- The kinematic viscosity of the fluid is specially formulated for Sullair, ensuring normal flow even at low temperatures and long life at high temperatures.
- You can choose the exclusive 24KT maintenance-free fluid of Sullair. (Note: For other types of fluid (food grade), please contact Sullair's After-Sales Market Department)

Sullair Color Touch Screen Controller

- 10-inch color touch screen with user-friendly interface.
- Comes with curves and charts to help you analyze the performance of the compressor.
- Sequence control of up to 16 units, much higher than other brands in the market.

Airlinx Remote Monitoring System

- The air compressors can be monitored whenever and wherever possible to prevent the risk of unexpected downtime affecting your production.
- Monitor operating temperature and pressure, monitor operating time and maintenance intervals.
- Remind customers of the maintenance cycle.
- Automatically save related longer information.
- Customize report method for customer's operation (basic or professional).

Others

- Standardly equipped with Y-D star delta start.
- Standardly equipped with non-destructive drain valve.
- Standardly equipped with phase-sequence control.
- Standardly equipped with enclosed chassis.

YOU CAN CHOOSE SULLAIR'S EXCLUSIVE 10 YEARS DIAMOND WARRANTY FOR THE AIR END

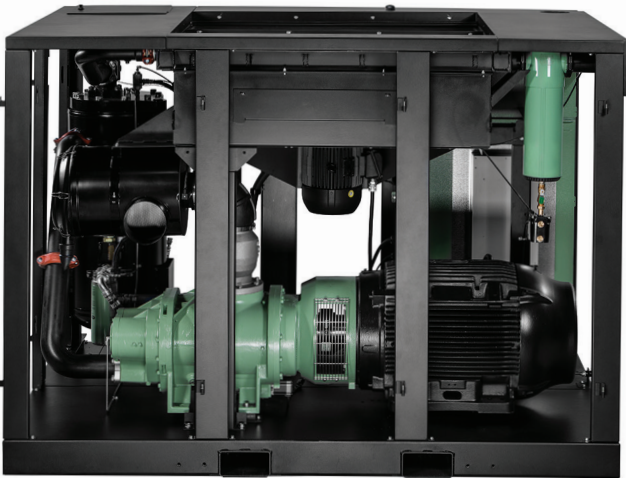
10 years warranty provided exceptionally for Sullair's screw air end. (the only one in the industry)

Note: Sullair original parts and 24KT maintenance-free fluid are required.



GUARANTEE OF HIGH PERFORMANCE: SCREW AIR END

THE HEART OF SULLAIR'S AIR COMPRESSOR: SULLAIR SCREW AIR END



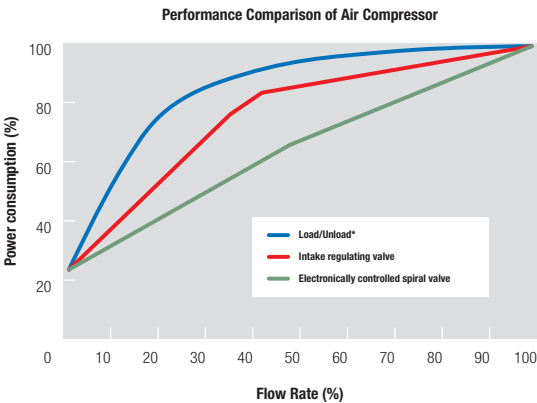
Sullair has more than 50 years of screw compressor technology and we have been committed to realizing continuous optimization.

Sullair's new generation of screw air end uses its more than 50 years' experience of screw air end design and manufacturing, and the screw is its most important part. Based on the latest research and technology, the new generation of Sullair's patented air end uses asymmetrical screw type, bringing you the ultimate performance experience.

- Simpler design, longer operating time and life. When developing the new generation of screw air end, Sullair engineers adopt the latest casting technology to integrate various oil circuits and passages to reduce the risk of leakage.
- Enlarged rotor diameter increases the volumetric efficiency and further optimizes the overall energy efficiency level.

It is one of Sullair's most efficient air end by far, not sacrificing the high durability and reliability that Sullair always adheres to and that recognized by various customers.

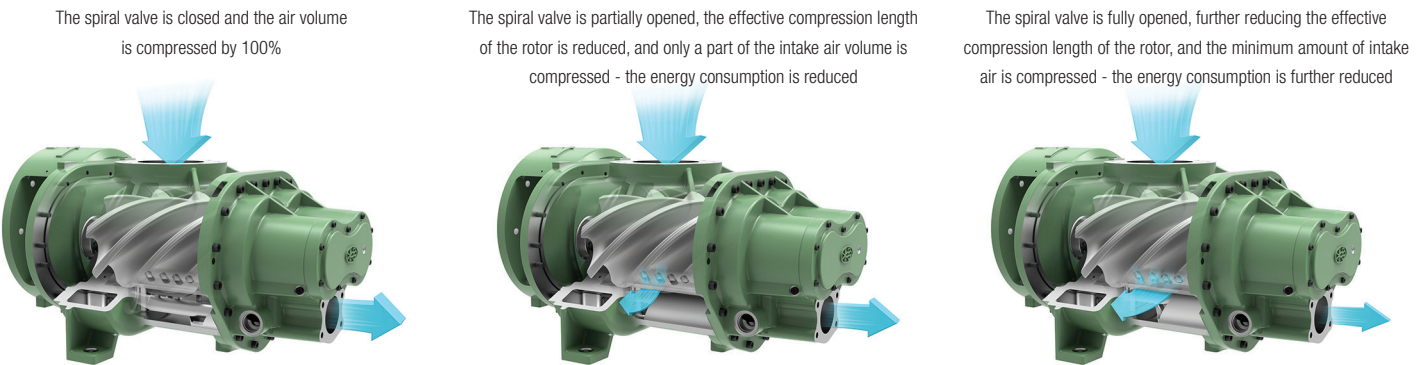
ELECTRONICALLY CONTROLLED SPIRAL VALVE (OPTIONAL)



The main cost of running the air compressor is electricity, and the saved electricity cost will help you recover the original purchase cost of the whole machine quickly. Our adjustment of the operating conditions of your air compressor is the best way to save, and the spiral valve control technology came into being.

Precise Control of Sullair Electronically Controlled Spiral Valve

- Compared with the traditional switch-type intake valve, the spiral valve regulates the chamber volume of the compressor (the effective length of the rotor) according to the change of the air consumption of the customer to achieve energy saving. When the customer's air consumption is lower than the rated air discharge of the unit, the spiral valve starts to work and the smaller the customer's air consumption, the larger the opening of the spiral valve is.
- Effectively avoids the air energy waste caused by frequent loading and unloading of air compressors with mechanical constant pressure control.
- The air capacity adjustment range of Sullair's patented spiral valve reaches 55%, and it is controlled and adjusted through the Sullair touch screen, realizing an adjustment accuracy of 1 PSI, which can perfectly match your actual air consumption status and bring you an energy-saving experience.
- Compared with other control methods, Sullair's patented spiral valve has unparalleled advantages. Under some load conditions, the energy saving can be as high as 10% or more.



VSD CONTROL

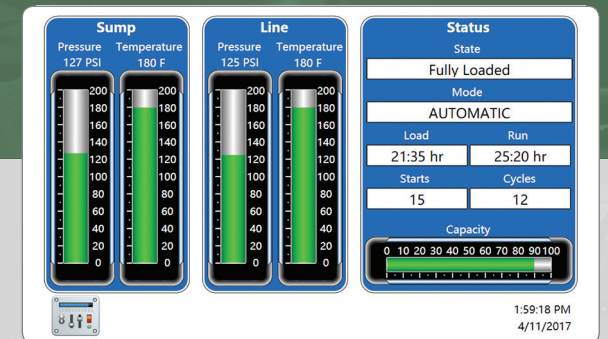
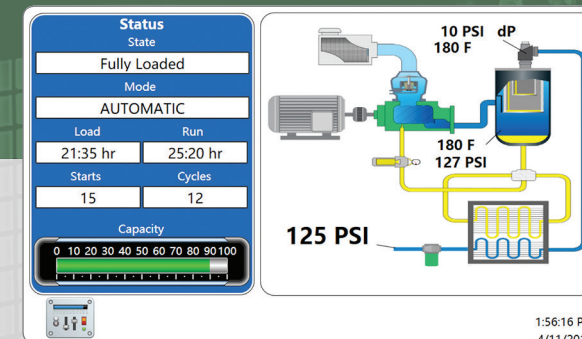
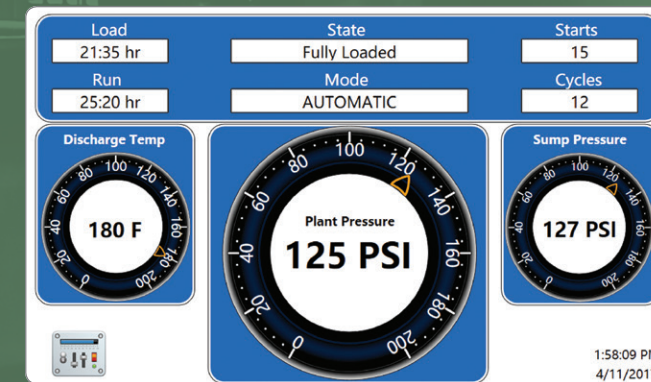
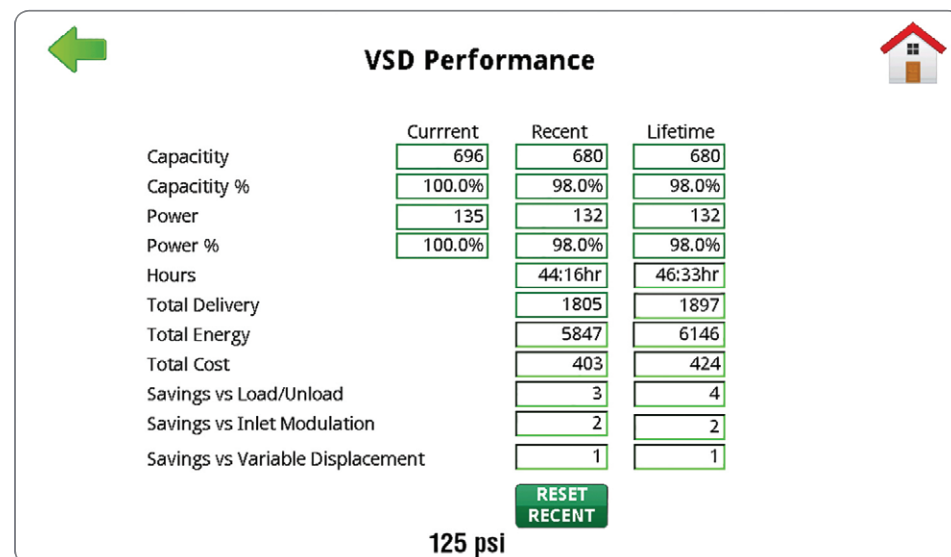
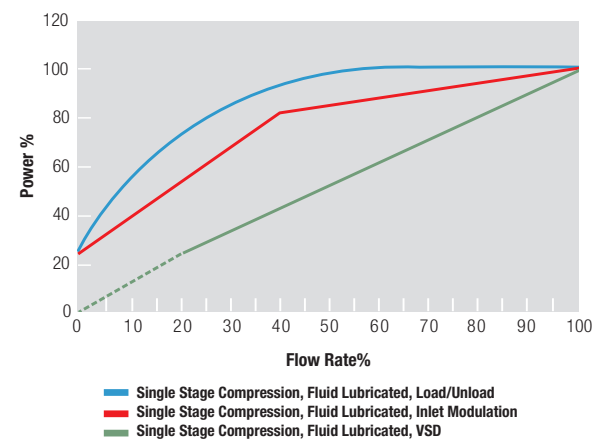
(ONLY VSD UNIT)

MAXIMUM ENERGY CONSUMPTION REDUCTION, MOST OPTIMIZED COMPATIBILITY CONTROL

The variable-frequency drive meets the change of air consumption by controlling and adjusting the motor speed.

Sullair VSD units provide you with extreme energy savings:

- Can save you at least 35% of power loss (compared to fixed speed units).
- Sullair has an air volume adjustment range of up to 75%, which is more suitable for your air consumption changes.
- VSD starting, no star delta configuration is needed, reducing the starting current impact on the grid, and no additional soft starter is required.
- No frequent starting and stopping, no frequent loading and unloading, constant pressure control, reducing system gas consumption and optimizing energy efficiency.
- The VSD configuration can freely adjust the pressure and volume of air supply to avoid your future equipment investment costs.
- User-friendly display interface, using Sullair 10-inch color touch screen, help you clearly understand the current operating conditions.
- The VSD unit adopts H-class insulated motors and reinforced insulation, which is more stable than ordinary F-class insulated motors.



Sullair's Independently Developed 10-inch Color Touch Controller

- Supports sequence control of up to 16 units.
- More communication interface types: Ethernet, MDBUS RTU protocol / ModBus TCP protocol, Cellular (Airlinx service).
- Remote control via VNC.
- NEMA4 environmental protection requirements.
- Expandable input and output interface.
- Controlled by electronically controlled spiral valve, realizing an accuracy of 1PSI.
- Supports power calculation.
- Supports curve-type trend monitoring of various operating parameters of air compressors.
- Supports adjustment of most controller parameters and partial access control.
- Supports data download.

Sullair's Independently Developed Airlinx Remote Monitoring System

- No matter when and where, a faster operation can be made by using a mobile phone, computer or tablet to remotely control the air compressor.
- Airlinx can help you reduce the risk of unexpected downtime.
- Pressure monitoring.
- Temperature monitoring.
- Monitoring of operating hours and maintenance intervals.
- Service and maintenance reminders.
- Cyclic data storage every 15 minutes.

Airlinx can Provide Reports in A Customized Format

- Basic: Report faults or alarms via email and SMS.
- Professional: Track and visualize the various operating states of the air compressor and monitor them with professional reporting tools.



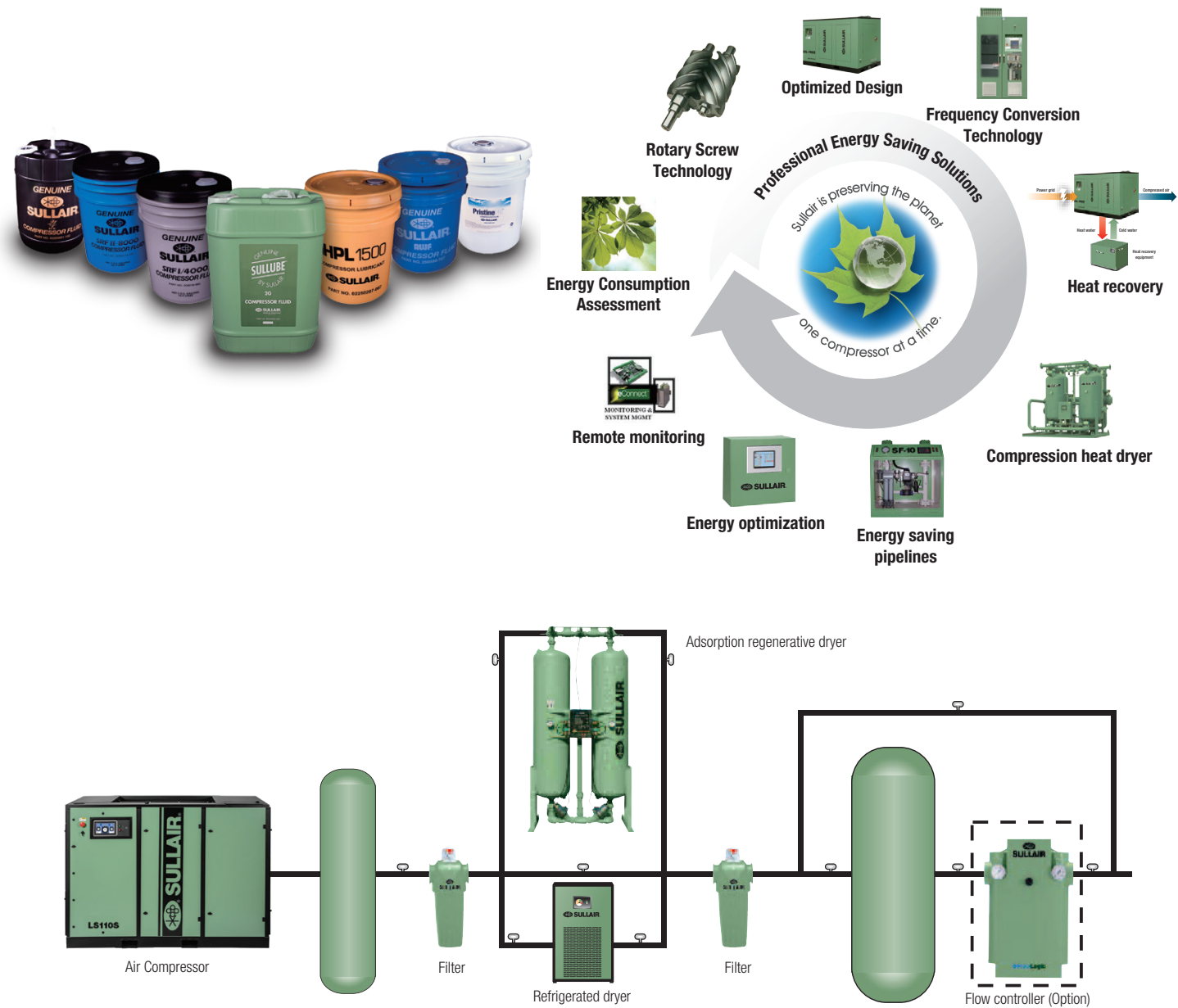
SULLAIR ORIGINAL SPARE PARTS AND FLUID

SULLAIR DOWNSTREAM TREATMENT SYSTEM

AND VARIOUS VALUE-ADDED SERVICES

Choosing Sullair, what you get is more than just an air compressor. You are buying the world's leading screw technology and global service capabilities. We provide you with quality after-sales products and after-sales service.

If you have any needs, please contact the distributors in your area or Sullair's after-sales marketing department.



PRODUCT INFORMATION AND TECHNICAL PARAMETERS

For more information, please contact Sullair distributors in your area.

Technical parameters

Compressor model	Motor power kW/HP	Rated voltage / frequency V/Hz	Cooling mode	Maximum pressure bar(g)	Air discharge m³/min	Unit weight kg	Unit size L*W*H mm	Air Discharge size	Remarks	
LS-90	90/125	380 V/50 Hz	Air-cooled or water-cooled	7.6	18.9	2,650	2,509x1,760x1,773	NPT 3	Standard powerfrequency unit	
LS-110	110/150			Air-cooled or water-cooled	8.6					17.8
					10.6					15.4
			7.6		22.3	2,730				
			8.6	21.2						
			10.6	18.8						
LS-90S	90/125	380 V/50 Hz	Air-cooled or water-cooled	7.6	18.9	2,650	2,509x1,760x1,773	NPT 3	Optional electronically controlled spiral valve	
LS-110S	110/150			Air-cooled or water-cooled	8.6					17.8
					10.6					15.4
			7.6		22.3	2,730				
			8.6	21.2						
			10.6	18.8						
LS-90V	90/125	380 V/50 Hz (VSD)	Air-cooled or water-cooled	7.6	4.7~18.9	2,750	2,509x1,760x1,773	NPT 3	VSD unit	
LS-110V	110/150			Air-cooled or water-cooled	8.6					4.7~17.8
					10.6					4.7~15.4
			7.6		5.1~22.3	2,830				
			8.6	5.1~21.2						
			10.6	4.7~18.8						

- Unit performance parameters and acceptance criteria shall be subject to Appendix C, ISO 1217.
- Reference conditions: absolute intake pressure: 1 bar; air intake temperature: 200C; relative humidity: 0%.
- The air discharge measured at the following working pressures is: 7 kg for the 7.6 bar model; 8 kg for the 8.6 bar model and 10 kg for the 10.6 bar model.

Options

		Standard	Option
Flow control	90 kW 110 kW	On/off control valve	Electronically controlled spiral valve (for power-frequency unit only)/VSD unit
Fluid	90 kW 110 kW	8,000 hours Sullube+ 5 years warranty for the air end	24KT maintenance-free fluid + 10 years warranty for the air end Food-grade fluid (please contact the Sullair's dealer or After-Sales Market Department)
Cooling System	90 kW 110 kW	0-46 ° C design temperature model (air-cooled / water-cooled)	55° C high temperature model (for power-frequency unit only)
Motor	90 kW 110 kW	IE3 TEFC	IE3 TEFC+ Motor space heater
Other (Special Configuration)	90 kW 110 kW	Please contact your Sullair dealer. Our company will serve you wholeheartedly	

Maintenance plan

	2,000 小时	4,000 小时	6,000 小时	8,000 小时	10,000 小时	12,000 小时	14,000 小时	16,000 小时	...	24,000 小时
Air filter	●	●	●	●	●	●	●	●	...	●
Fuel filter	●	●	●	●	●	●	●	●	...	●
Fluid separator element	—	—	—	●	—	—	—	●	...	●
Fluid	—	—	—	●	—	—	—	●	...	●
Service kit for control line filter	—	●	—	●	—	●	—	●	...	●
Motor bearing grease	—	●	—	●	—	●	—	●	...	●
Service kit for inlet valve	—	—	—	—	—	○	—	—	...	●
Service kit for thermal valve	—	—	—	—	—	○	—	—	...	●
Service kit for min pressure valve	—	—	—	—	—	○	—	—	...	●
Service kit for pressure regulator	—	—	—	—	—	○	—	—	...	●

● Maintenance Required ○ Maintenance Recommended — Maintenance-free